

COMUNE DI FASANO

Provincia di Brindisi

PROGETTO: PIANO DI LOTTIZZAZIONE - Comparto 14

Via Garibaldi - FASANO

COMITENTE:
Cooperativa Edilia
72015 - Fasano (Br)
Via S. Maria, 2

TRAVATA n. 1 Pulito (acquisizione parte del sito Pulito)

ATTI ANTI Adempimenti comunali art. 5/05 MTA Pulito

Imp.:

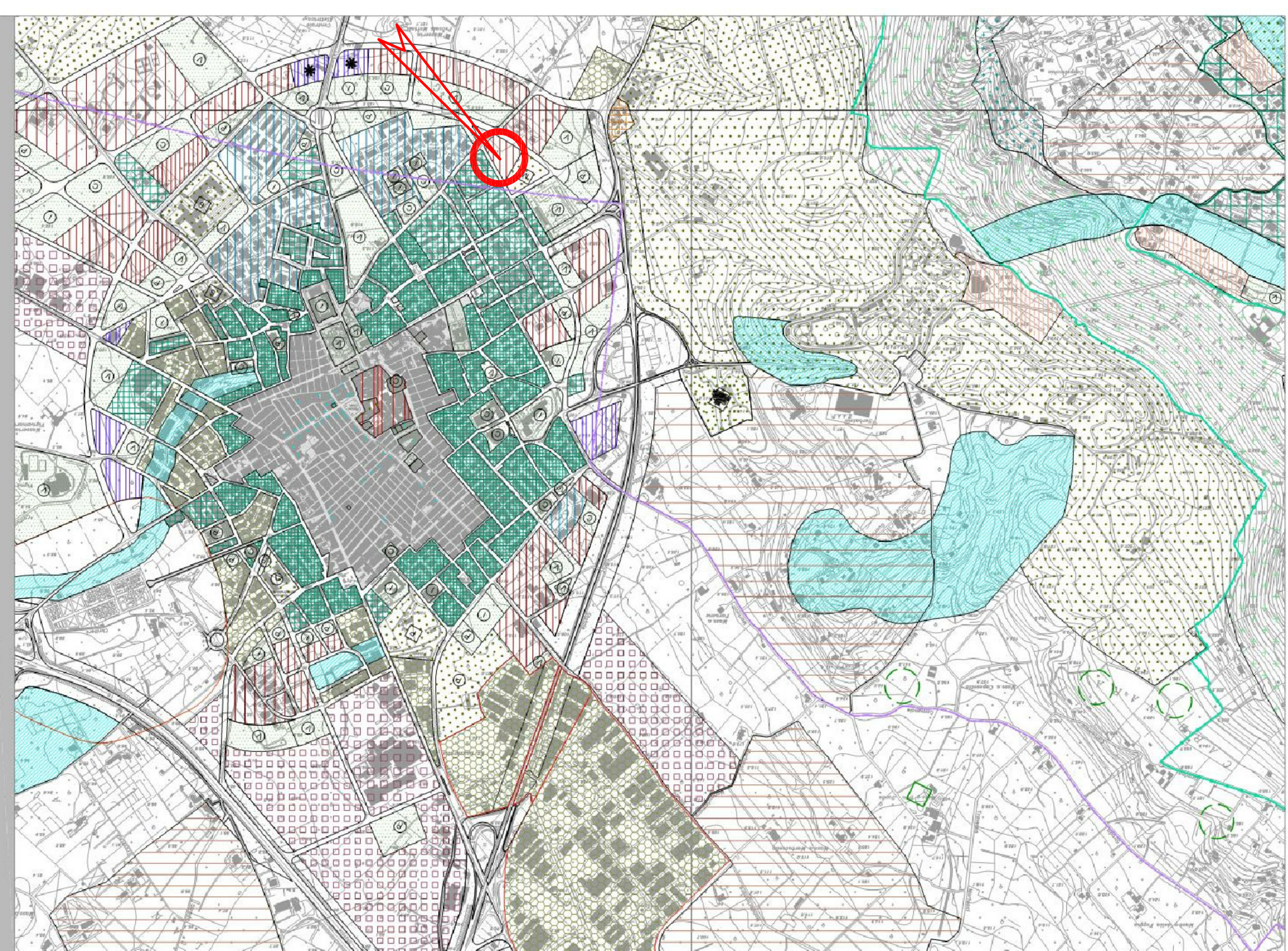
Progettista:

Arch. Giovanni Misa

DATA prima elaborazione dicembre 2009

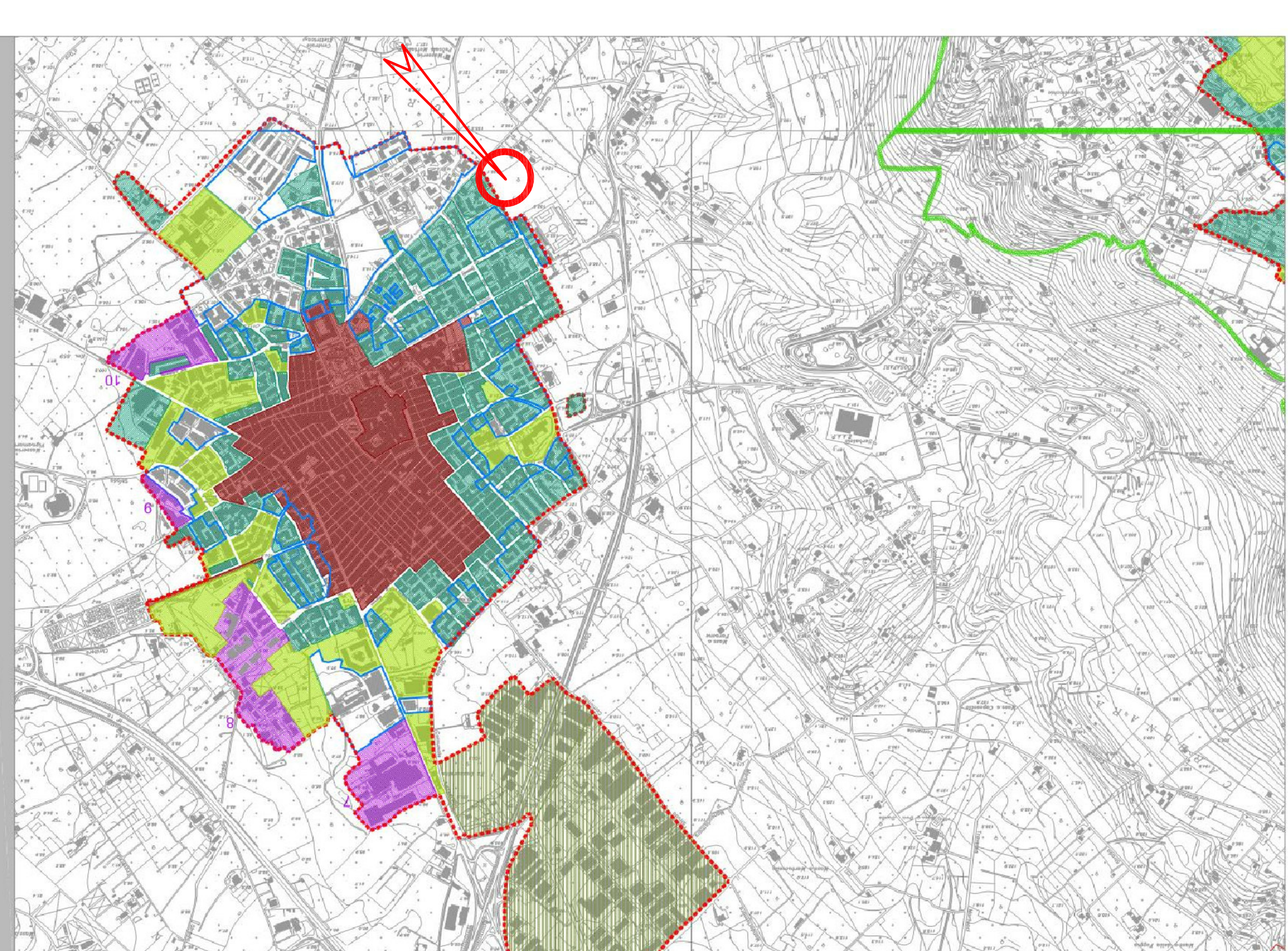
Redattore:

Municipio di Fasano - Comune di Fasano - Via S. Maria, 2 - 72015 Fasano (Br) - Tel. 0874/200001 - Fax 0874/200002 - E-mail: fasano@comune.fasano.br.it



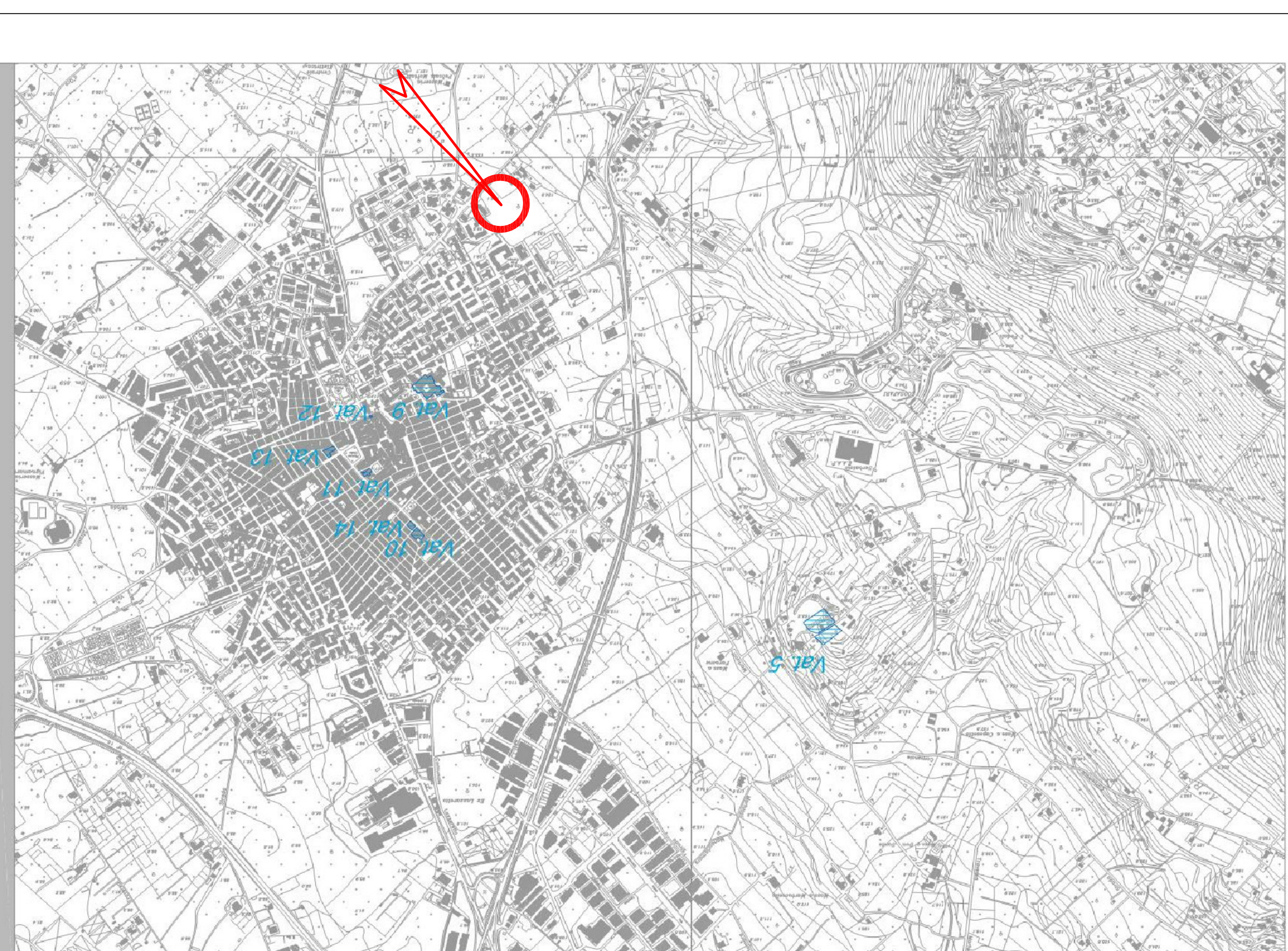
3-2 PRS0 Agraria

Scala 1:10.000



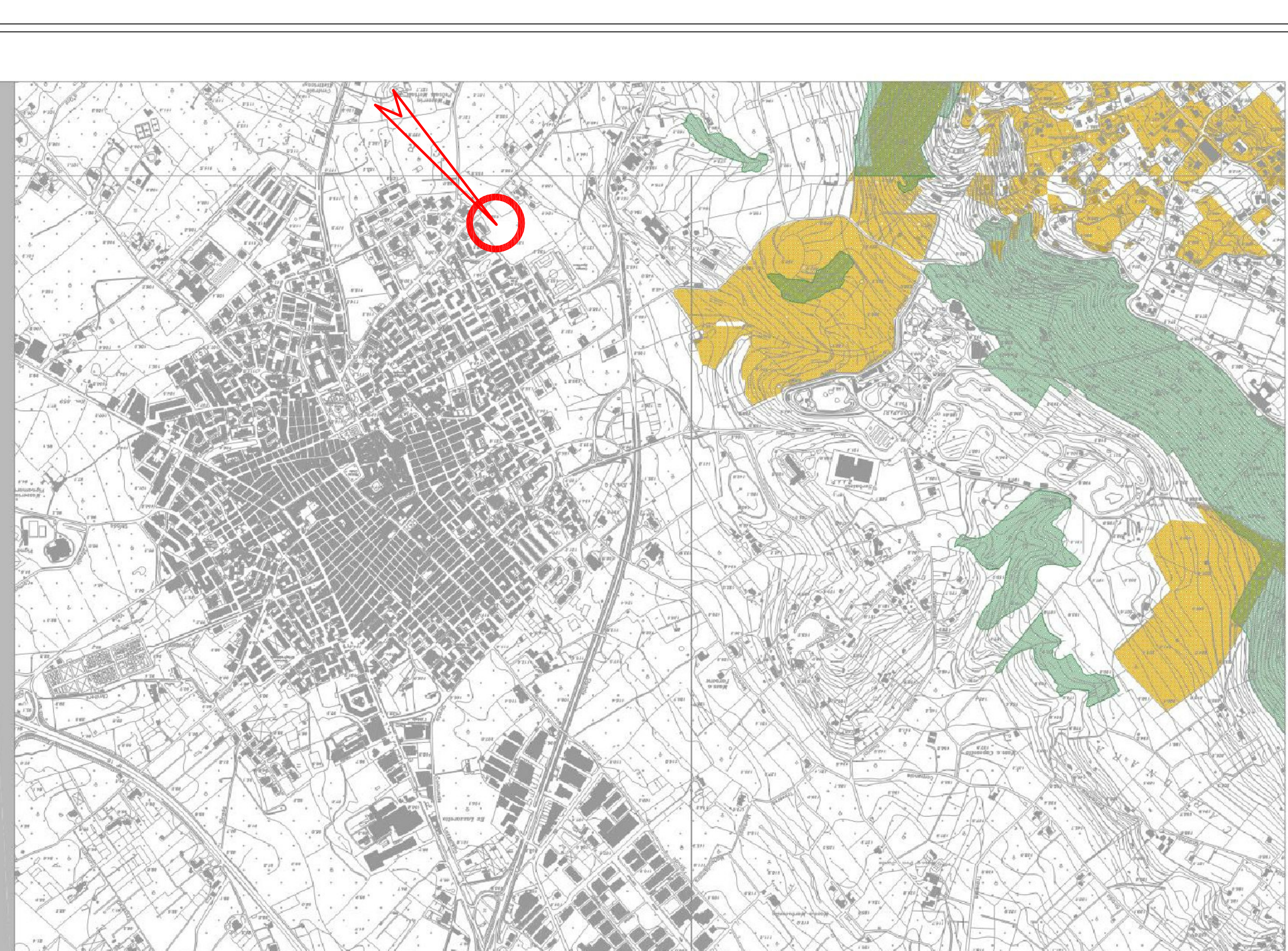
3-2 Termini comunali

Scala 1:10.000



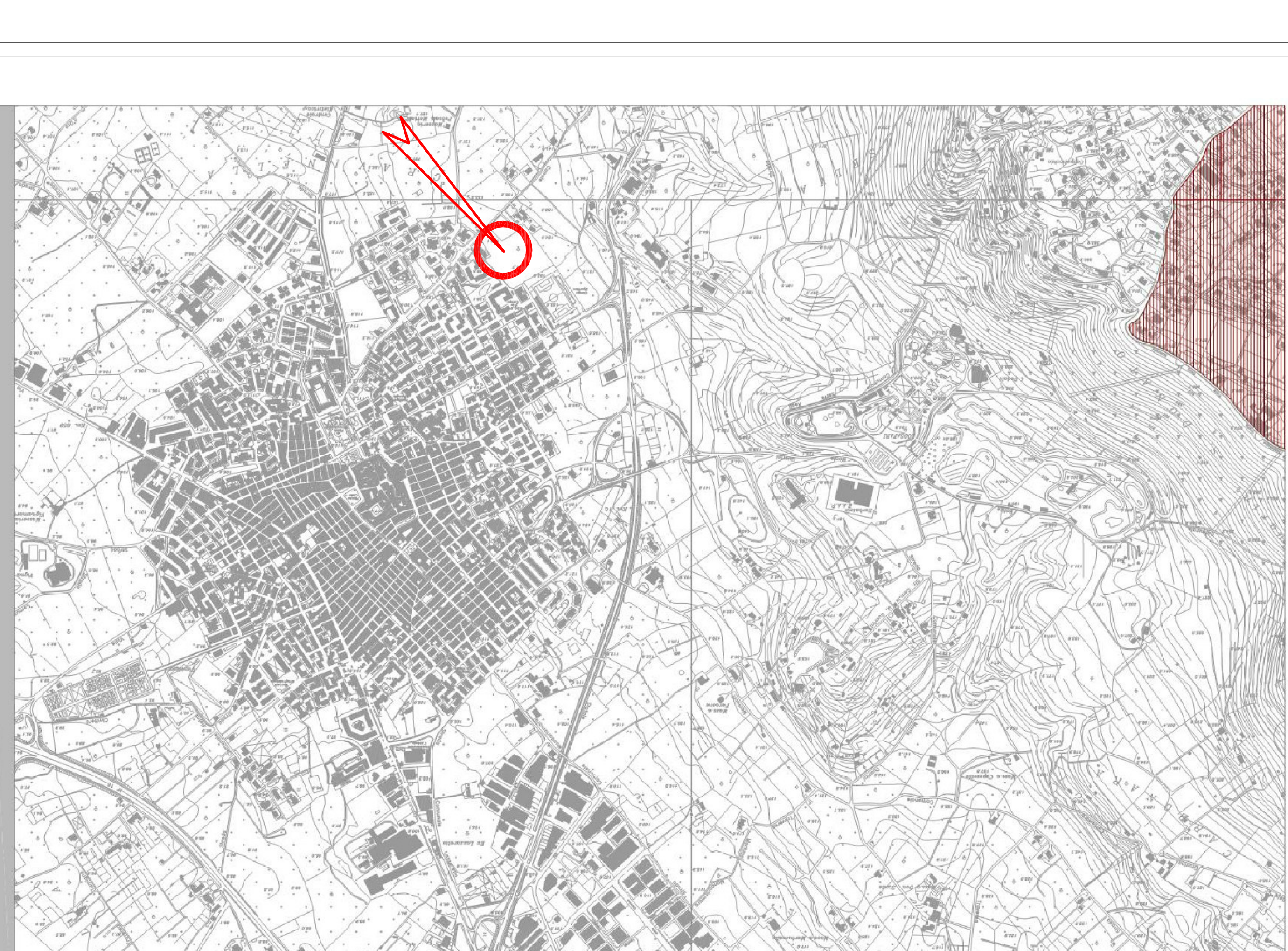
3-2 Vincoli 140729 e 105830

Scala 1:10.000



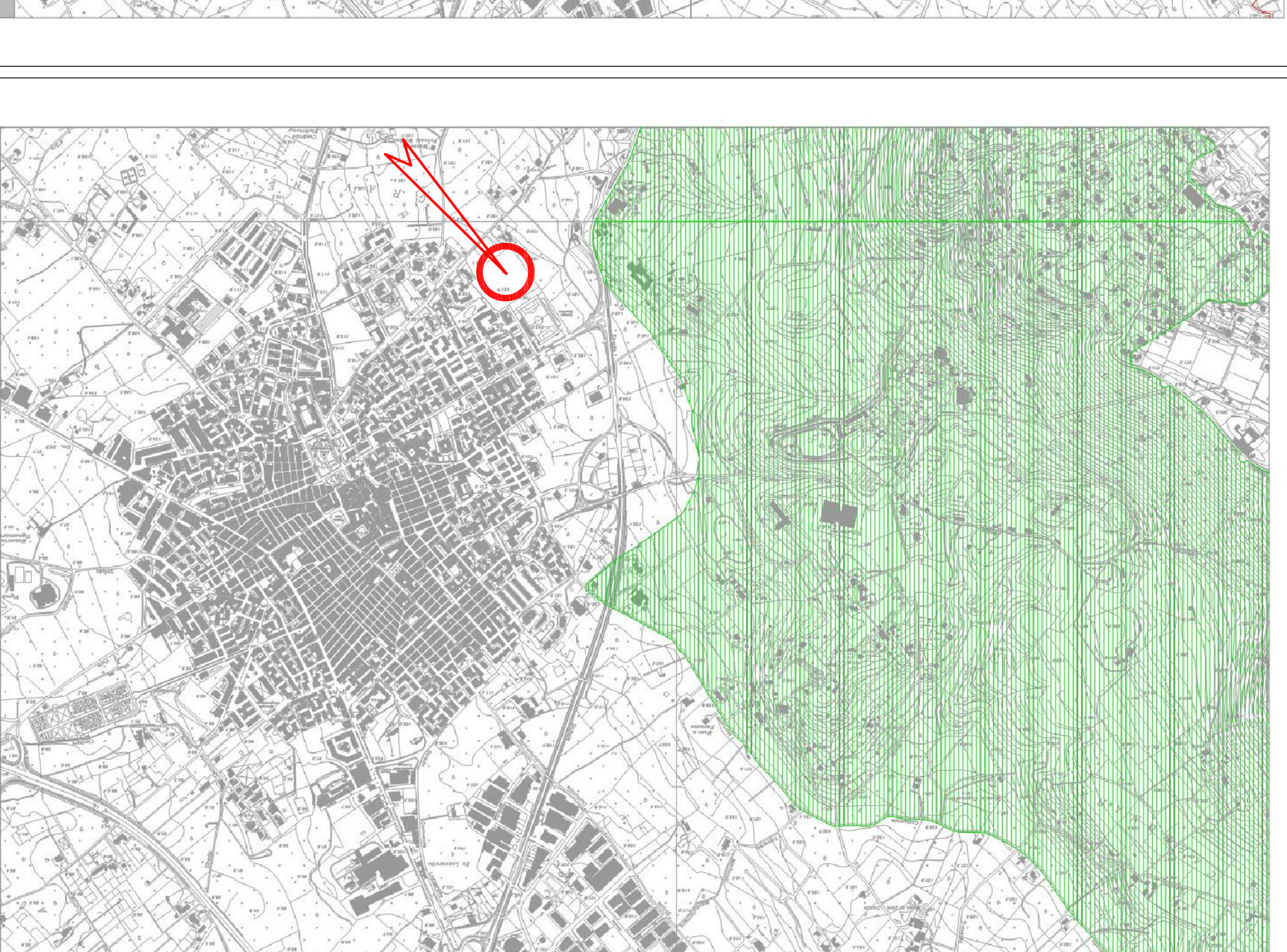
3-2 Vincoli ex legge 43/195

Scala 1:10.000



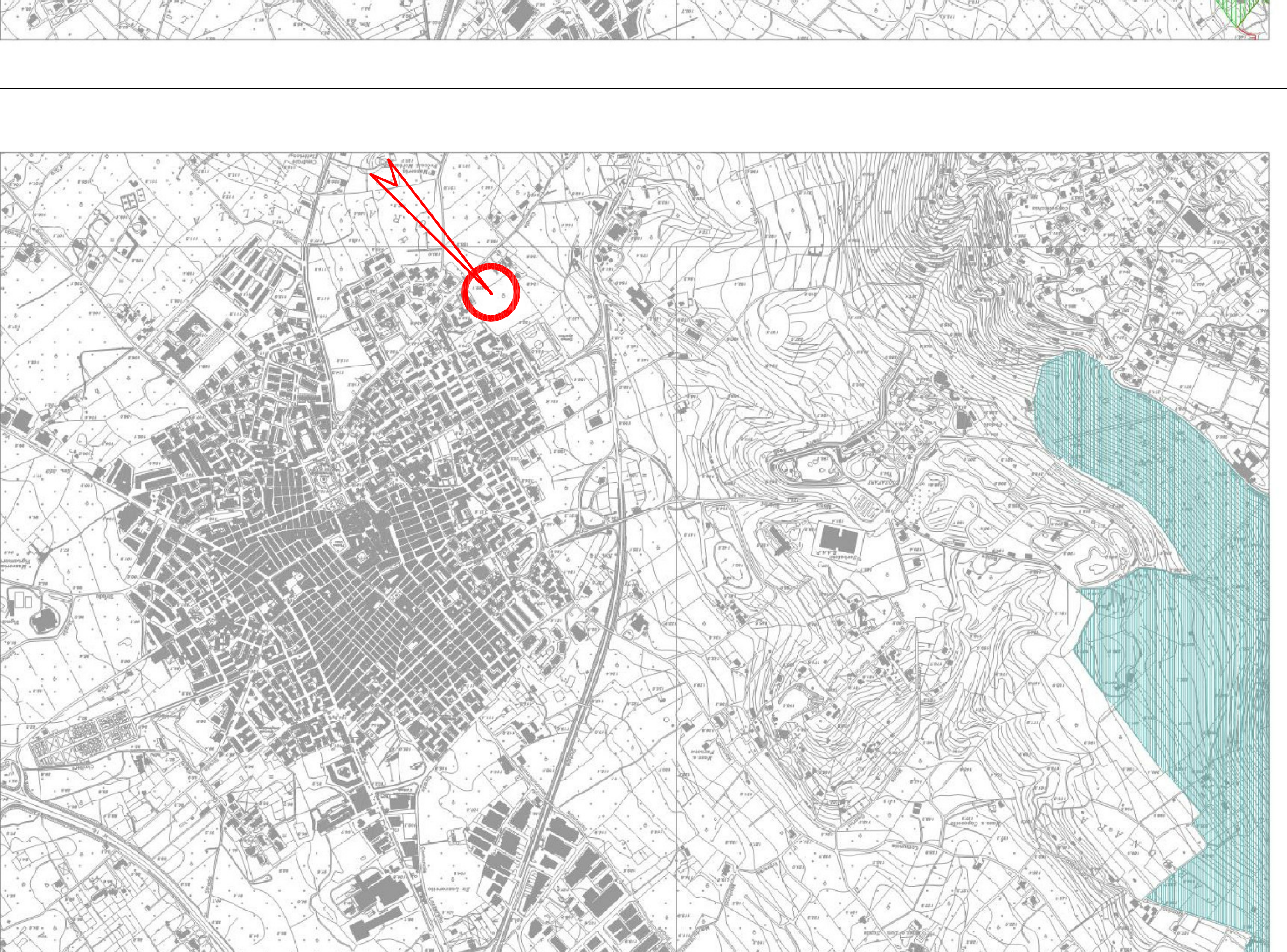
3-2 Vincoli paesistici

Scala 1:10.000



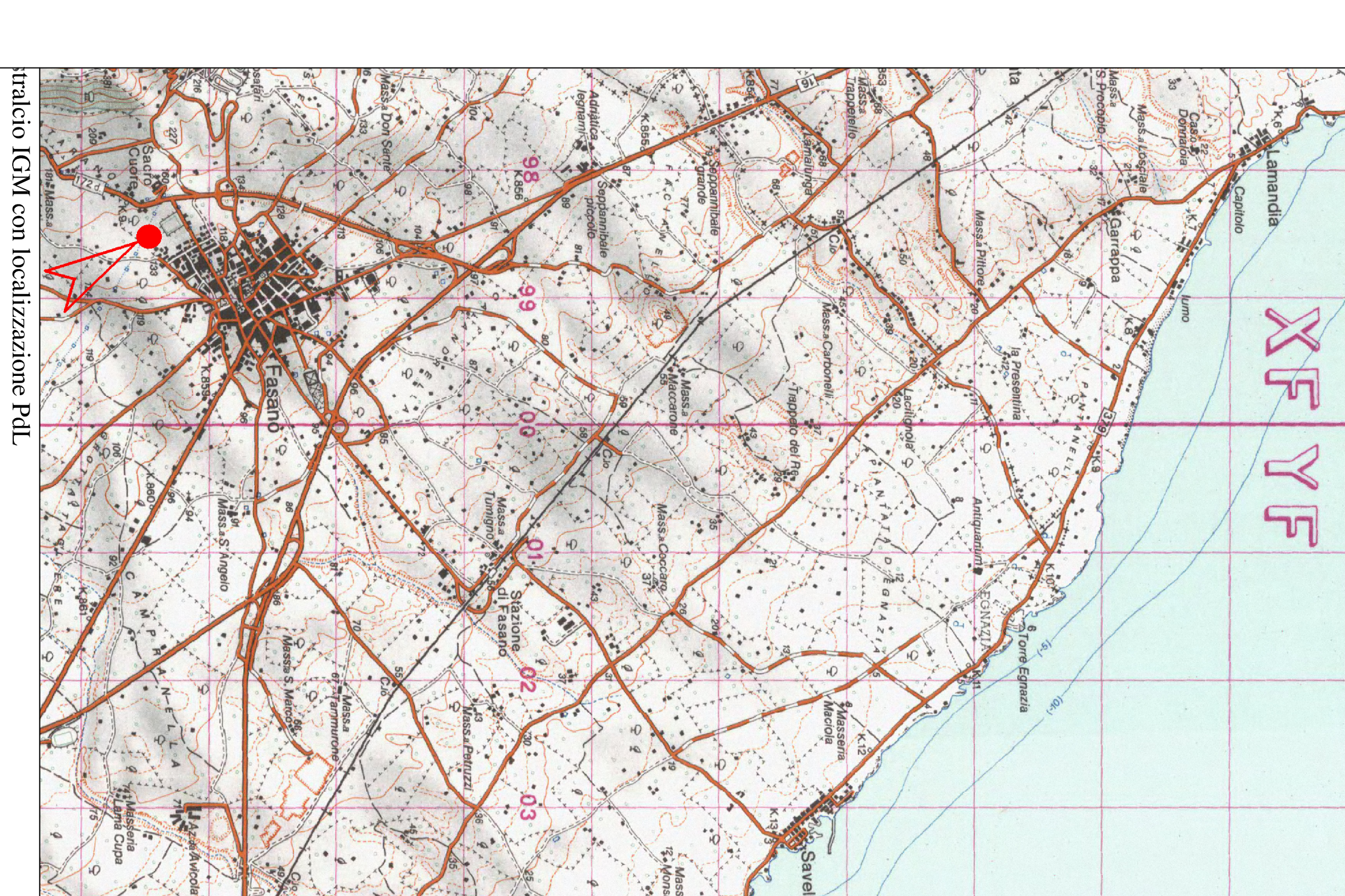
3-2 Vincoli idrogeologici

Scala 1:10.000

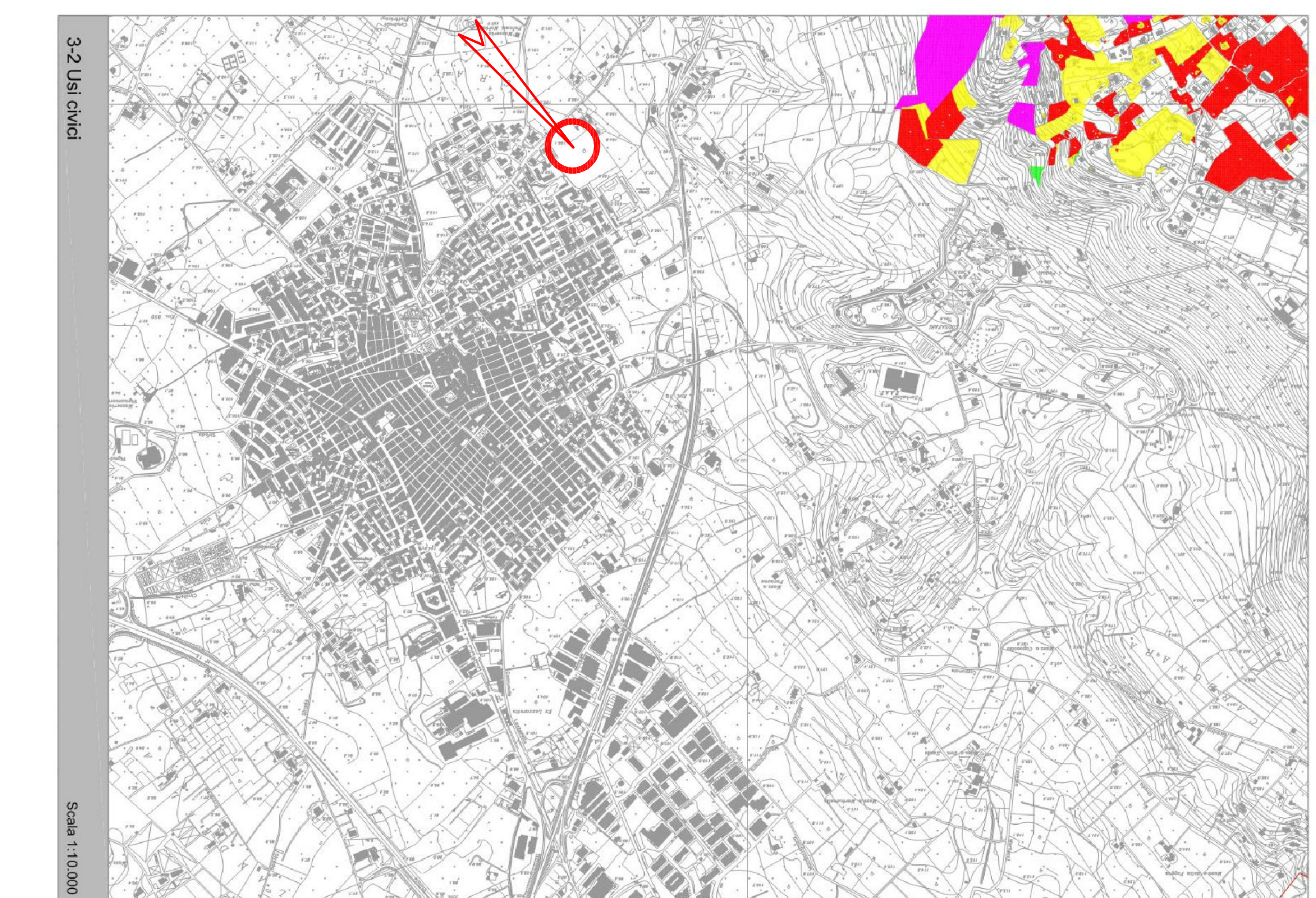


3-2 SIC e ZPS

Scala 1:10.000

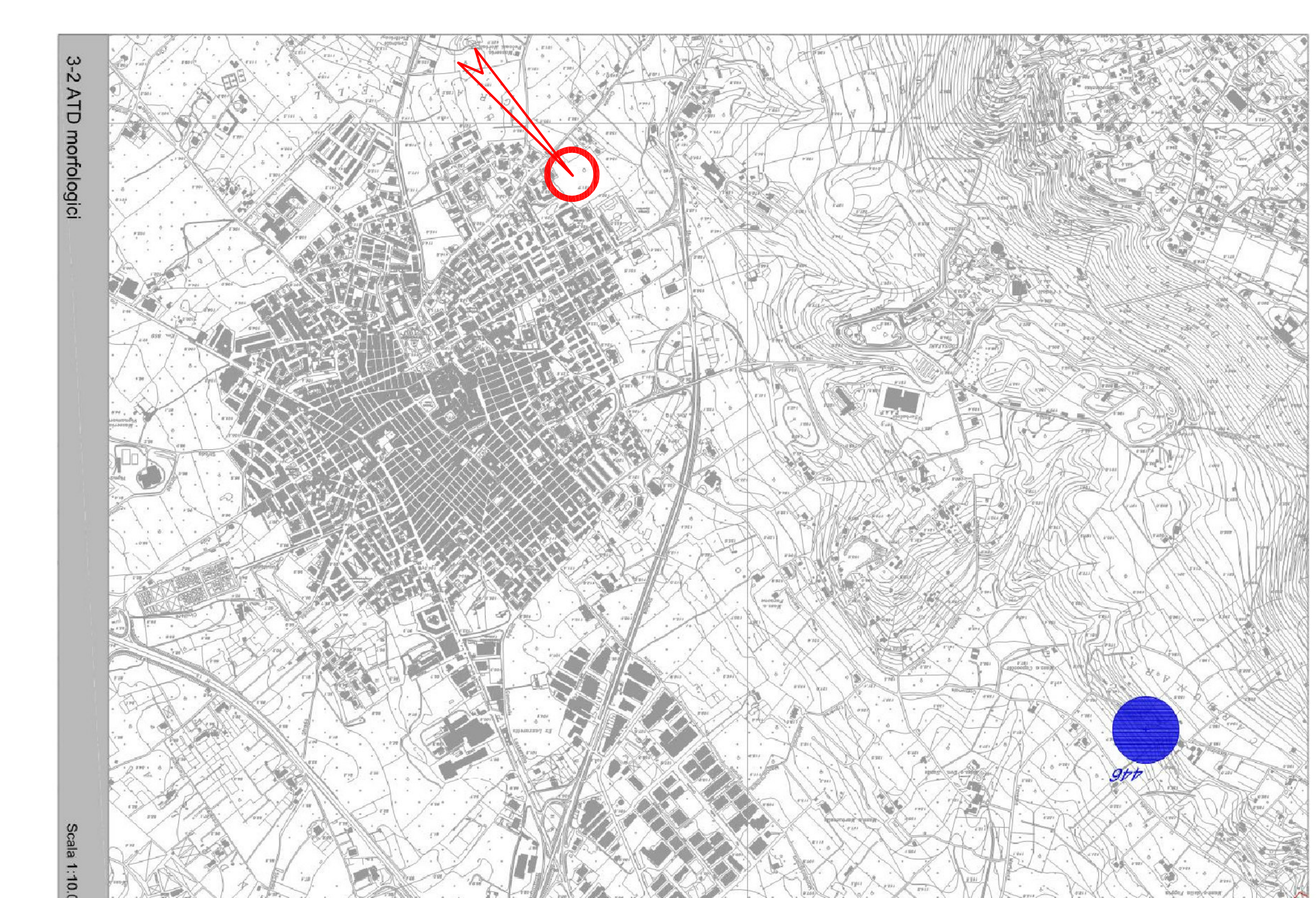


inquadro IGV con localizzazione PUL



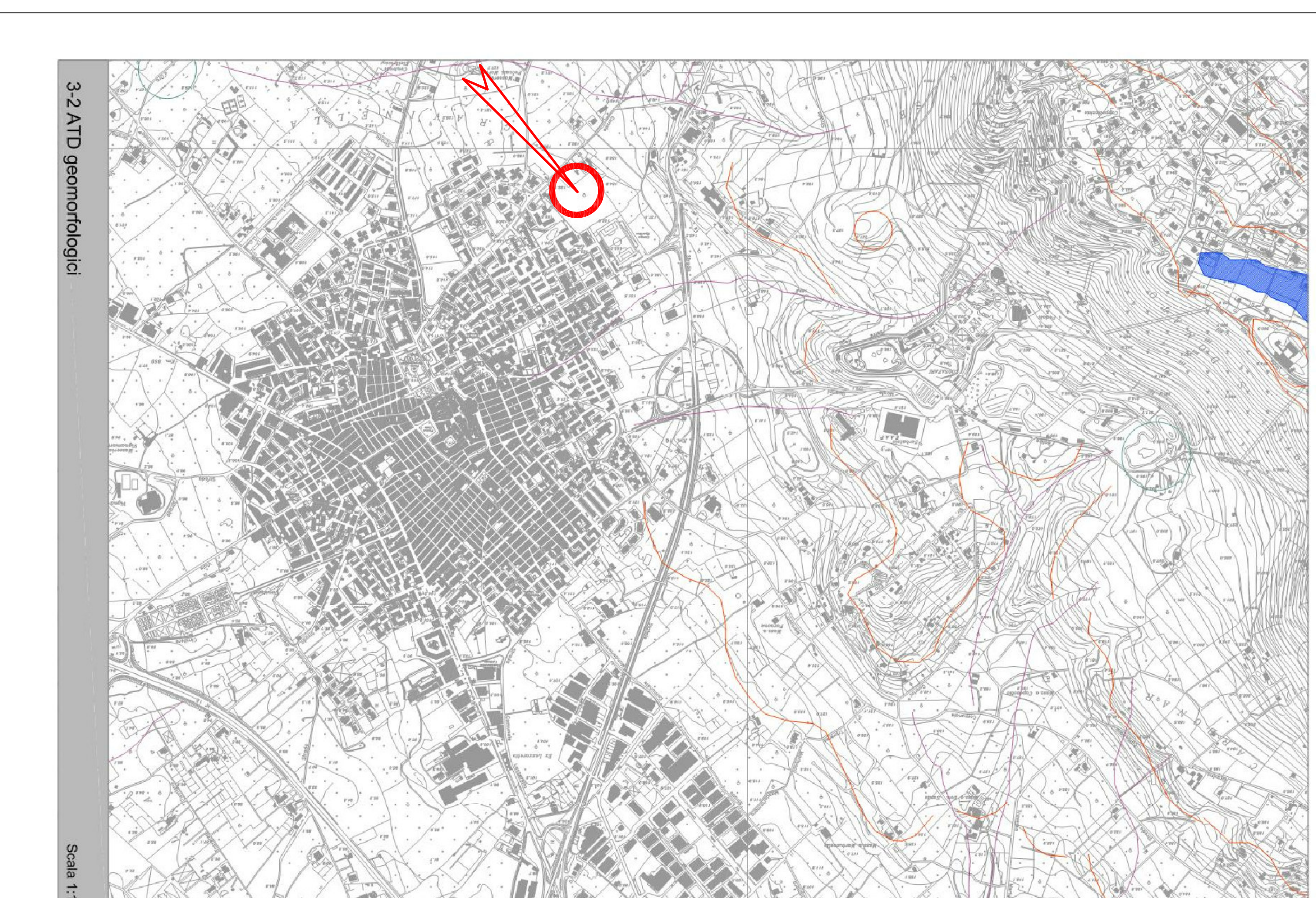
3-2 LU0404

Scala 1:10.000



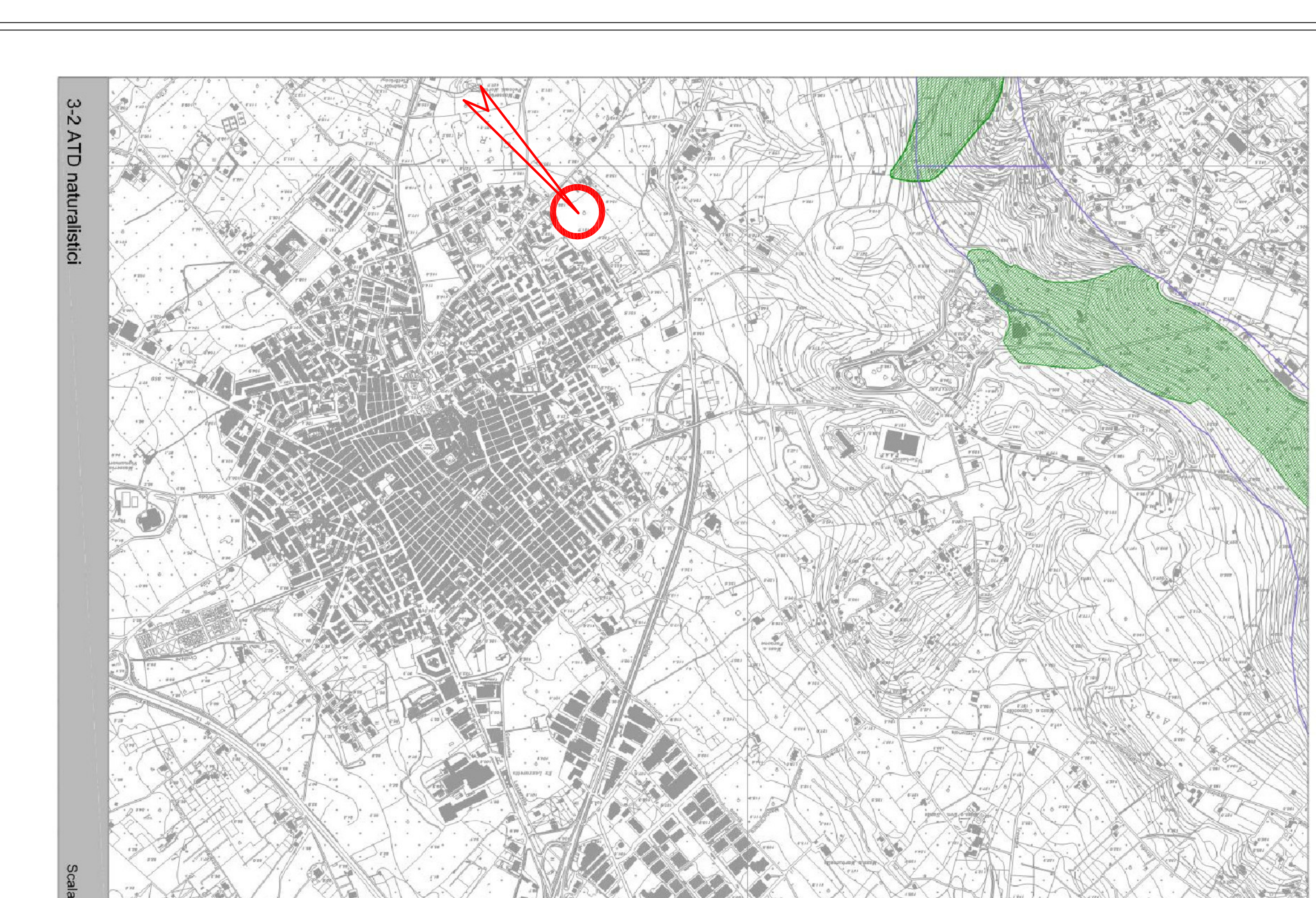
3-2 ATD morfologici

Scala 1:10.000



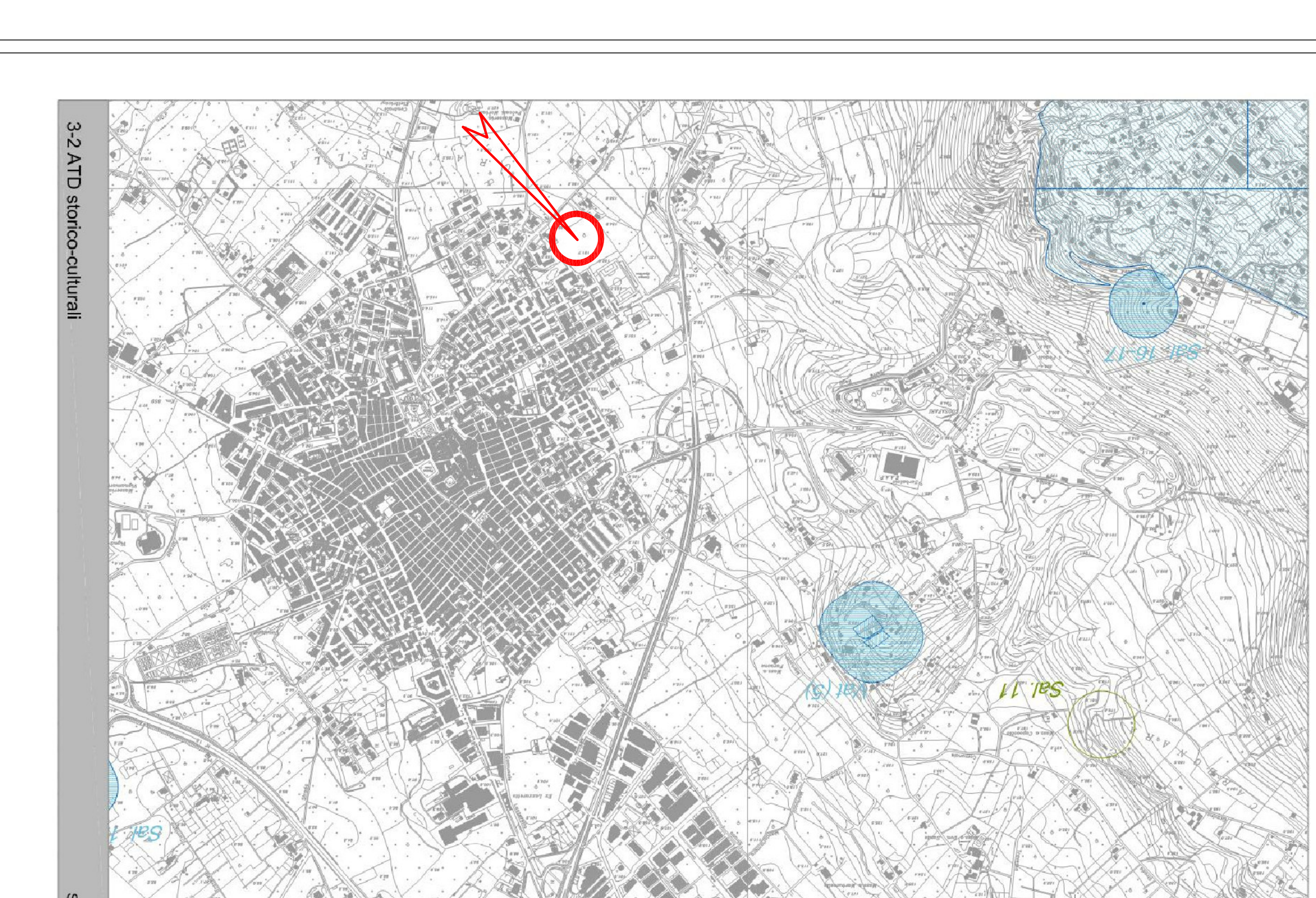
3-2 ATD geologici

Scala 1:10.000



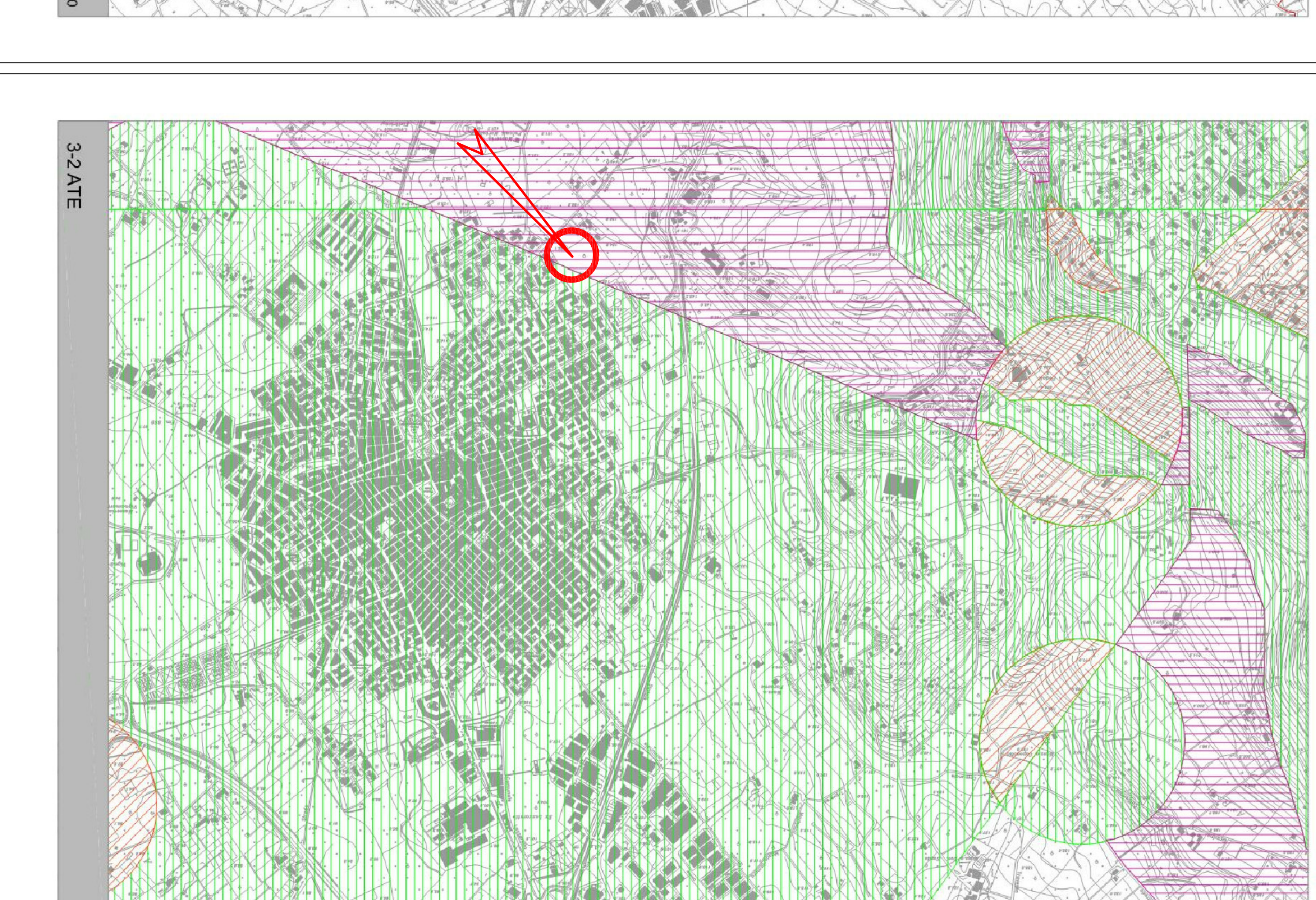
3-2 ATD idraulici

Scala 1:10.000



3-2 ATD storico-culturali

Scala 1:10.000








3-2 ATE

Scala 1:10.000



ATE Quadro d'insieme

LEGENDA

-  ATE di tipo A
-  ATE di tipo B
-  ATE di tipo C
-  ATE di tipo D
-  ATE di tipo E